

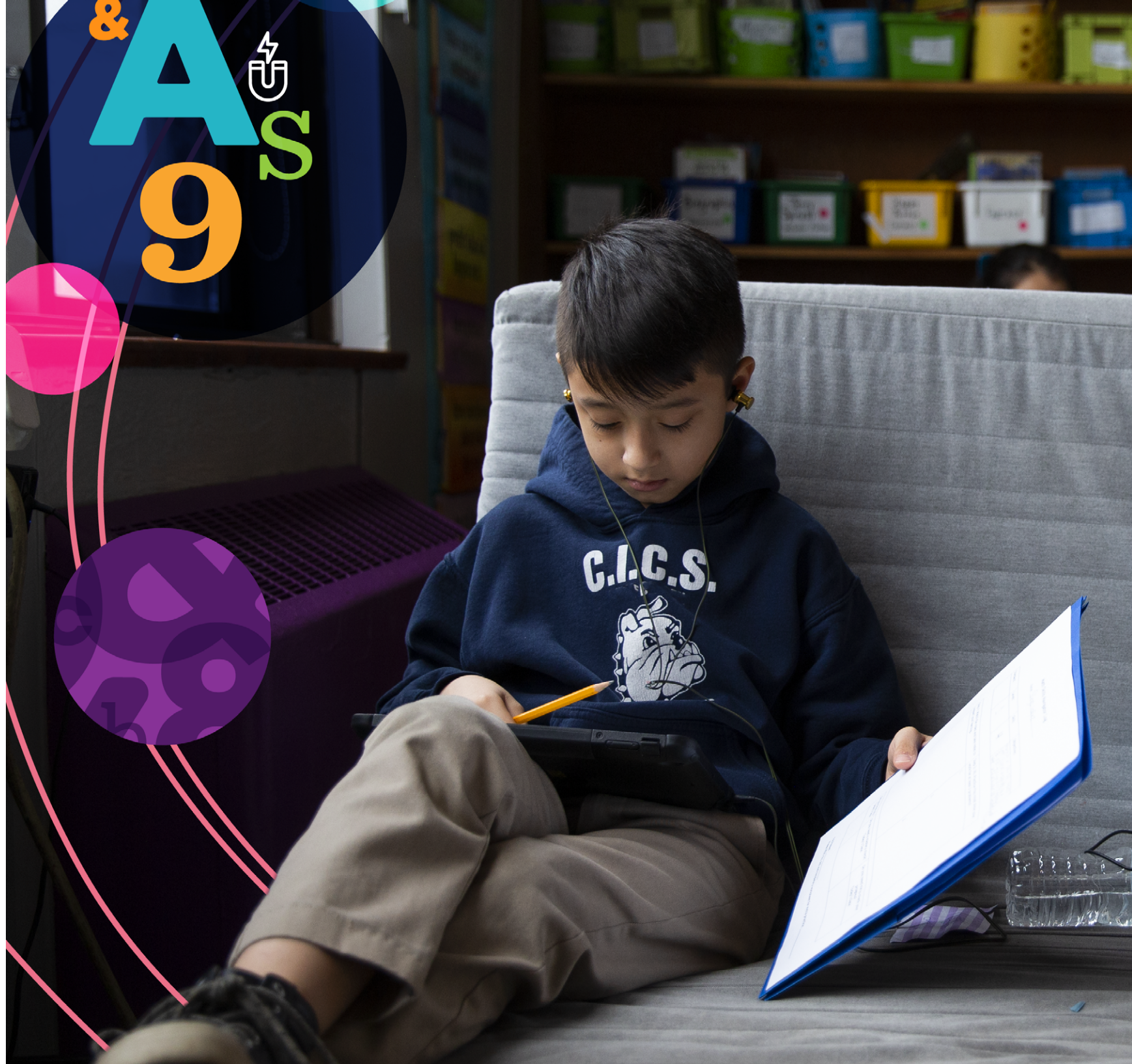
**nwea**  
Professional  
Learning

**map** Accelerator

powered by  Khan Academy

Turn learning evidence into  
instructional action

Activate MAP® Accelerator™ by learning  
how to best implement it in the  
classroom to simplify differentiation  
in math and leverage instructional  
strategies that accelerate outcomes.

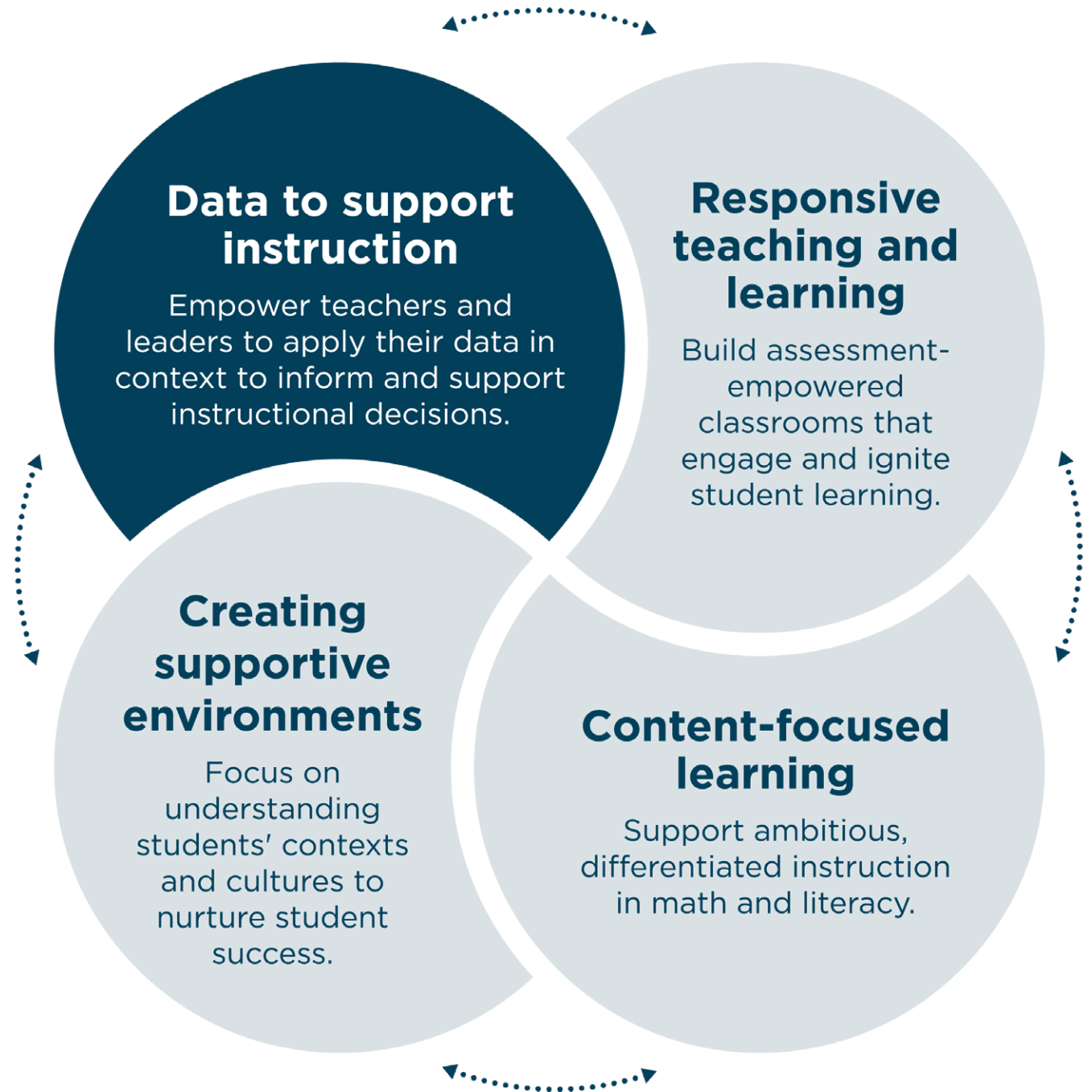


# Professional learning that drives instructional change

Teachers demand and deserve the opportunity to grow, learn, and develop as professionals. NWEA® Professional Learning engages teachers in collaborative conversations that foster high-quality, ambitious instruction that improves student outcomes.

We develop professional practice in the four critical, interconnected categories that help educators make the most instructional impact.

The MAP Accelerator Professional Learning suite is part of the Data to Support Instruction series.





# Available offerings

## MAP Accelerator

Discover the value MAP Accelerator will bring to you and your students. MAP Accelerator uses MAP Growth™ scores to automatically generate personalized learning pathways based on standards-aligned content from Khan Academy. Understand how to implement this tool in your classroom and leverage instructional strategies that support differentiated learning for all students.

### Delivery options tailored to meet your needs



#### Onsite learning

Face-to-face sessions with a consultant



#### Virtual learning

Live online instruction

### Which duration is right for you?

#### 1-hour sessions provide:

- A high-level overview
- Opportunities to brief larger groups in a shorter amount of time
- Flexible scheduling for before- or after-school meetings

#### 2-hour sessions provide:

- Foundational learning
- Opportunities to use new learning with personalized practice
- Flexible scheduling for after school or part of a learning day

#### 3-hour sessions provide:

- A more detailed look at topics and strategies
- Opportunities for discussion, collaboration, and reflection

## FOR TEACHERS

	MAP Accelerator basics for teachers	MAP Accelerator basics: Introduction	MAP Accelerator basics: Teacher experience
	3-hour agenda Onsite/Virtual	2-hour agenda Virtual	1-hour agenda Virtual
<b>Hour 1</b>	Understand what makes MAP Accelerator unique.	Understand what makes MAP Accelerator unique.	Understand what makes MAP Accelerator unique.
<b>Hour 2</b>	Learn the steps you will need to take for your class to begin using MAP Accelerator. Tour the MAP Accelerator teacher dashboard.	Learn the steps you will need to take for your class to begin using MAP Accelerator. Tour the MAP Accelerator teacher dashboard.	Learn the steps you will need to take for your class to begin using MAP Accelerator. Tour the MAP Accelerator teacher dashboard.
<b>Hour 3</b>	Explore the student experience and learn how to engage your class in MAP Accelerator.		

## FOR LEADERS

	MAP Accelerator basics for leaders	
	3-hour agenda Onsite/Virtual	2-hour agenda Virtual
<b>Hour 1</b>	Understand what makes MAP Accelerator unique.	Understand what makes MAP Accelerator unique.
<b>Hour 2</b>	Learn how to navigate the MAP Accelerator administrator dashboard and how to engage your school or district in using MAP Accelerator.	Plan the implementation for your school or district.
<b>Hour 3</b>	Explore the teacher experience.	Explore the teacher experience.

# Available offerings

## Using results

Respond to student needs and learn practical strategies for using MAP Accelerator in your classroom after administering MAP Growth. MAP Accelerator uses MAP Growth scores to automatically generate personalized learning pathways based on standards-aligned content from Khan Academy.

## Delivery options tailored to meet your needs



### Onsite learning

Face-to-face sessions with a consultant



### Virtual learning

Live online instruction

## Which duration is right for you?

### 1-hour sessions provide:

- A high-level overview
- Opportunities to brief larger groups in a shorter amount of time
- Flexible scheduling for before- or after-school meetings

### 2-hour sessions provide:

- Foundational learning
- Opportunities to use new learning with personalized practice
- Flexible scheduling for after school or part of a learning day

### 3-hour sessions provide:

- A more detailed look at topics and strategies
- Opportunities for discussion, collaboration, and reflection

## FOR TEACHERS

### MAP Accelerator: Using results in the classroom for teachers

	<b>3-hour agenda</b> Onsite/Virtual	<b>2-hour agenda</b> Virtual	<b>1-hour agenda</b> Virtual
<b>Hour 1</b>	Learn how to navigate key reports in MAP Accelerator.	Learn how to navigate key reports in MAP Accelerator.	Outline structures to support integrating MAP Accelerator into classroom instruction.
<b>Hour 2</b>	Outline structures to support integrating MAP Accelerator into classroom instruction.	Outline structures to support integrating MAP Accelerator into classroom instruction.	
<b>Hour 3</b>	Engage in a process to respond to students' needs before and during a lesson.		

## FOR LEADERS

### MAP Accelerator using results for leaders

	<b>3-hour agenda</b> Onsite/Virtual	<b>2-hour agenda</b> Virtual	<b>1-hour agenda</b> Virtual
<b>Hour 1</b>	Learn how to navigate key reports in MAP Accelerator for school and district leaders.	Learn how to navigate key reports in MAP Accelerator for school and district leaders.	Learn how to navigate key reports in MAP Accelerator for school and district leaders.
<b>Hour 2</b>	Generate operational reports to understand teacher and student activation and usage and to identify next steps to improve implementation.	Generate operational reports to understand teacher and student activation and usage and to identify next steps to improve implementation.	
<b>Hour 3</b>	Consider how MAP Accelerator data relate to district-, school-, and grade-level goals.		

# Available offerings

## Classroom strategies and student goal setting

MAP Accelerator can help with student goal setting and guide instructional practices that sustain growth throughout the year. Two MAP Growth test seasons with MAP Accelerator are recommended before taking these sessions.

## Delivery options tailored to meet your needs



### Onsite learning

Face-to-face sessions with a consultant



### Virtual learning

Live online instruction

## Which duration is right for you?

### 1-hour sessions provide:

- A high-level overview
- Opportunities to brief larger groups in a shorter amount of time
- Flexible scheduling for before- or after-school meetings

### 2-hour sessions provide:

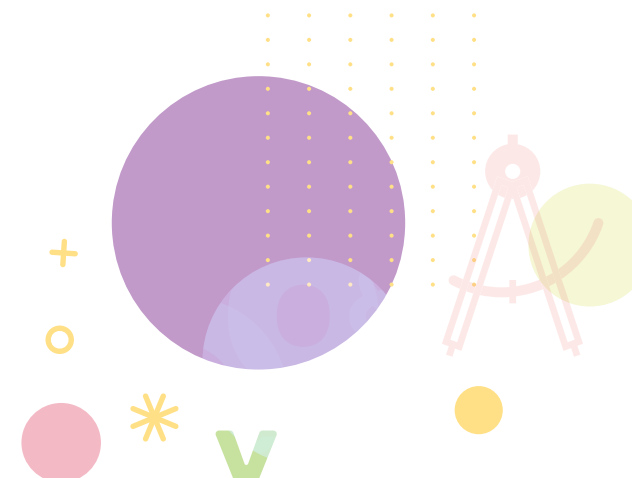
- Foundational learning
- Opportunities to use new learning with personalized practice
- Flexible scheduling for after school or part of a learning day

### 3-hour sessions provide:

- A more detailed look at topics and strategies
- Opportunities for discussion, collaboration, and reflection

## FOR TEACHERS

	MAP Accelerator classroom strategies	MAP Accelerator student goal setting	
	3-hour agenda Onsite/Virtual	3-hour agenda Onsite/Virtual	2-hour agenda Virtual
Hour 1	Explore best practices for maximizing the use of MAP Accelerator in your classroom.	Specify how setting math goals helps inform teaching and learning.	Identify relevant data and resources for goal setting. Use a collaborative process for goal setting with students.
Hour 2	Investigate strategies for engaging students and creating accountability for learning.	Identify relevant data and resources for goal setting.	Use a collaborative process for goal setting with students.
Hour 3	Develop a plan for integrating MAP Accelerator into your classroom culture.	Use a collaborative process for goal setting with students.	



# Power up your professional learning with these additional services:

**Want to deepen the learning with additional time and space for application and practice?**

## **Instructional coaching for teachers**

Continue the learning from any of our offerings by adding collaborative coaching. A highly qualified thought partner and practitioner will lead teachers through an inquiry-based coaching cycle to deliver a highly responsive and contextualized experience that takes the learning from theory to practice, using evidence-based and research-driven methods to build teacher capacity, efficacy, and instructional skill.

**Want to measure the impact of professional learning on teaching effectiveness and student learning?**

## **Learning and evaluation services**

This set of tailored tools and services measures the impact of professional learning on participants, school systems, and students. Beginning with a comprehensive needs assessment, our evaluation services are fully integrated with the planning and delivery of your professional learning to ensure the unique learning needs of your district are being met.

**Interested in deeper learning around math instruction?**

## **Responsive math practices professional learning**

Explore our responsive math practices offerings, which provide educators with a deep understanding of content and research-based instructional practices and ways to apply that understanding to their unique grade-level instructional needs and content standards.







Make meaningful, measurable  
instructional change.

Discover more at [NWEA.org/professional-learning](https://www.nwea.org/professional-learning) or by  
contacting us at 866.654.3246.

**nwea**

NWEA is a mission-driven organization that supports students and educators worldwide by providing assessment solutions, insightful reports, professional learning offerings, and research services. Visit [NWEA.org](https://www.nwea.org) to find out how NWEA can partner with you to help all kids learn.

© 2023 NWEA. NWEA and MAP are registered trademarks, and MAP Growth and MAP Accelerator are trademarks, of NWEA in the US and in other countries.

Khan Academy is a registered trademark of Khan Academy, Inc. in the US and in other countries.

The names of other companies and their products mentioned are the trademarks of their respective owners.

MAR23 | WELTSK5366